

OPEN EYE GALLERY

Open Eye Gallery
19 Mann Island
Liverpool Waterfront
L3 1BP

www.openeye.org.uk
@OpenEyeGallery

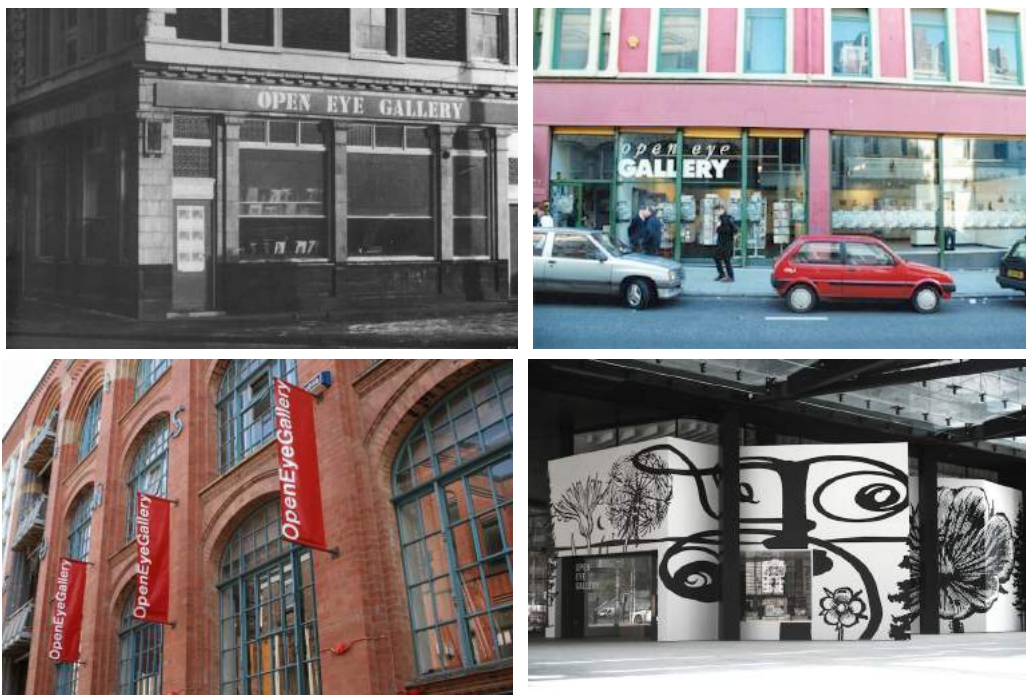
+44 (0) 151 236 6768

info@openeye.org.uk

Company Limited by Guarantee No.1204519 &
Registered Charity No.1056743

Press Release.

40 YEARS OF OPEN EYE GALLERY: 1977-2017



L-R: Whitechapel (1977-1989), Bold Street (1989-1995), Wood Street (1995-2011), Mann Island (2011-present)

Colin Wilkinson, Founder of Open Eye Gallery

"Open Eye Gallery, where I... was dynamic. We were doing an exhibition a month. It wasn't madness – it was exciting. Opportunities came up and we took them." - 1978

Mandy, Visitor

"Open Eye Gallery, where I... protested against an exhibition. Myself and other feminists sprayed shaving foam on some quite graphic images of women." - 1980

Martin Parr, Photographer

"Open Eye Gallery, where I... exhibited The Last Resort with Tom Wood. The Gallery was a nice place to go. It was what you might call shabby chic, but it worked and functioned well and the show got a good response." - 1986

Simon Norfolk, Photographer

"Open Eye Gallery, where I... discovered photography was what I'd do for the rest of my life. Having a voice that people want to hear is a rare privilege." - 1999

Debbie Chan, Previous member of staff

"Open Eye Gallery, where I... got my first full-time job as trainee programme assistant. A significant occasion, because my Chinese parents always supported my madness for the arts, but never knew how." - 2000

Tim Riley, Architect (Mann Island gallery)

Open Eye Gallery, where I... felt immense pride to be told that the design had captured the spirit of the Gallery and continued to provoke and engage the people of the city." - 2011

Phoebe Kiely, Photographer

"Open Eye Gallery, where I... was given my first exhibition. I was given a voice throughout. I grew more as an artist during that exhibition than I ever had before." - 2016

Join us for an exciting year ahead as we launch our 40th birthday celebrations.

Over this 40 year period, Open Eye Gallery has exhibited some of the world's most inspiring and insightful photographers. We have championed the agency of photography as art, as social and historical document, and as integral to the cultural impact of music, fashion, architecture and many other disciplines.

In 2017, Open Eye Gallery will be celebrating our deep connection to place. Working in partnership, we explore the visual identity of the North, the City as a site for global exchange, the history and future of counter culture and the people & communities of our City Region.

6 January - 19 March 2017

North: Identity, Photography and Fashion

Launch Night: Thursday 5 January 2017, 6pm-9pm

#North

The North of England has had an enormous influence on national and international visual culture and fashion. This exhibition starts with the Mass Observation movement in the 1930s and explores The North through documentary photography, fashion editorials, video footage, garments and trainers, all the way to a recent *Arena Homme+* article on the legacy of Morrissey. Supported by adidas and co-curated by Lou Stoppard (editor at Nick Knight's award-winning fashion website SHOWStudio) and Adam Murray (photographer and senior lecturer in Fashion Communication at Liverpool John Moores University), the exhibition considers why the region has proved a constant inspiration to designers, artists and image-makers.

April - June 2017

Culture Shifts Global

#CultureShifts

Culture Shifts is an Open Eye Gallery led programme of 10 photographers working with different communities across Liverpool City Region to co-author work exhibited in 6 key galleries during 2017.

Our exhibition *Culture Shifts Global* is exploring the city and urbanism seen through outsiders eyes. In collaboration with the University of Salford we are inviting Hong Kong photographers Luke Ching and Wong Wo Bik to make work in Liverpool, and supporting a British Hong Kong-born photographer, Derek Man to revisit Hong Kong. This programme is part of LOOK/17: Liverpool International Photography Festival, titled '*Cities of Exchange: Liverpool/Hong Kong*'.

July - September 2017

Open 3: Liverpool Agents of Change

#Open3

Our birthday year is about celebrating ideas of the City. *Liverpool Agents of Change* looks at new photographers seeking out communities, businesses or individuals who are driving change in our city. The exhibition is aligned with Culture Liverpool's celebration of *50 Summers Of Love* (championing Liverpool's leading counter-cultural history).

The *Open* series of exhibitions supports early career and emerging photographers. *Open* is supported by the Brian Mercer Charitable Trust.

October - December 2017

Culture Shifts Local

#CultureShifts

Culture Shifts Local will sit the expertise of 9 photographers alongside communities from across the city region to explore stories meaningful to them. By co-authoring stories that reflect people's identity, interests or lives, we hope to inspire, surprise or challenge a wider audience to participate - through a new digital platform (*PhotoStories*) and 6 partner exhibitions across the City Region during 2017 and this culminating exhibition at Open Eye Gallery.

Wall Work:

40 years of Open Eye Gallery: 1977-2017

Launching January 2017

#OEG40

Open Eye Gallery's success is down to the many people who have shaped and grown the organisation over the last 40 years. The new Wall Work features snapshot-quotes from 40 people reflecting upon their experience of Open Eye Gallery. Shaped by our Research Curator and oral historian Dan Warner, and designed by Thom Isom, through the 2017 facade of the gallery we wish to pay homage to a much larger group of photographers, volunteers, partners, visitors and staff who have championed our work.

New digital platform: PhotoStories

#PhotoStories

Launching in February 2017, a new digital platform *PhotoStories* (currently being developed in partnership with Liverpool's Red Ninja) will act as an online location for the photo stories created throughout our *Culture Shifts* programme. The platform will also welcome a wider public to upload their own photo stories, or share stories with others.

Associates Network

Launching in 2017, Open Eye Gallery's Associate Network is a grouping of photographers, academics, theorists and curators who together act to share and generate opportunities for broader engagement with photography. Through their varied interests, experience and projects, Open Eye Gallery hopes to profile the diverse and engaging photography that contributes to Liverpool's outstanding cultural ecology.

Talent Development

Open Eye Gallery is looking at talent development pathways working with schools, colleges and universities. The programme recognises that young people now curate and share their lives using photographs taken on mobile phones and are fearless in utilising creative apps – but, although over 70% of people learn visually, photography is rarely used as a learning tool in schools. The programme is exploring the benefits of the gallery as a cultural industry partner when studying by working with Hugh Baird University Centre in Bootle piloting a year round partnership, and project partners within the City Region and nationally to facilitate professional experience.

New Photographers Forum

The New Photographers Forum aims to support early career photographers living in the city region. It provides a platform to discuss their work and respond to their professional development needs.

ABOUT OPEN EYE GALLERY

We believe photography is for everyone and can be meaningful, informing our present and inspiring positive futures. Open Eye Gallery works with people to explore photography's unique ability to connect, to tell stories, to inquire, to reflect on humanity's past and present, and to celebrate its diversity and creativity.

Founded in 1977 Open Eye Gallery is an independent not-for-profit photography gallery based in Liverpool. One of the UK's leading photography spaces, Open Eye Gallery is the only gallery dedicated to photography and related media in the North West of England. Open Eye Gallery has consistently championed photography as an art form that is relevant to everyone. It promotes the practice, enjoyment and understanding of photography by creating challenging and entertaining opportunities to experience and appreciate distinctive, innovative photographs.

In November 2011 Open Eye Gallery re-launched in a brand new purpose-built home in one of the city's most prestigious and prominent new developments on the Liverpool Waterfront. The gallery's position at the heart of the regenerated Waterfront – next to the Museum of Liverpool and a stone's throw from Tate Liverpool and Albert Dock – cements its commitment to the city and its vibrant cultural life.

As well as presenting a programme of international, high-quality exhibitions Open Eye Gallery houses a permanent Archive containing photographs dating from the 1930s to the present day. The gallery also commissions Wall Works – large-scale graphic art installations for the external facade of the gallery.

CONTACT INFORMATION

If you need to contact us to ask a question, arrange interviews or request high-res image files, please email:
Charlotte Anne Down, Marketing & Communications Officer / charlotte@openeye.org.uk / +44 (0) 151 242 1131

Open Eye Gallery
19 Mann Island
Liverpool Waterfront
L3 1BP

Gallery opening hours:
10:30am–5:30pm, Tuesday–Sunday
*Closed on Monday, except Bank Holidays

Website: www.openeye.org.uk
Twitter: [@OpenEyeGallery](https://twitter.com/OpenEyeGallery)
Facebook: [/OpenEyeGallery](https://www.facebook.com/OpenEyeGallery)
Instagram: [@openeyegallery](https://www.instagram.com/openeyegallery)

CORE FUNDERS



Supported using public funding by
**ARTS COUNCIL
ENGLAND**



**Liverpool
City Council**

SUPPORTED BY



University of
Salford
MANCHESTER

The Brian Mercer Charitable Trust

Mersey Care **NHS**
NHS Foundation Trust

**THE
ATKINSON**



Knowsley Galleries
& Prescott Museum



 Knowsley Council

**HEART
OF
GLASS**

 St. Helens Council

NHS
Halton Clinical Commissioning Group



ART GALLERY & MUSEUM
WILLIAMSON

 **WIRRAL**

RED NINJA

Redeye
The Photography Network

LOOK

IN COLLABORATION WITH

SHOWstudio

Hugh Baird
UNIVERSITY CENTRE 

 **curious
minds**

SLICE

TATE