

**OPEN  
EYE  
GALLERY**

**PHOTOGRAPHY**

**EXHIBITIONS  
ARCHIVE  
EVENTS  
SHOP**

**OPEN:  
TUESDAYS — SUNDAYS  
10.30AM — 5.30PM**

**FREE ENTRY  
[www.openeye.org.uk](http://www.openeye.org.uk)**

# Introduction

Founded in 1977 Open Eye is an independent not-for-profit photography gallery based in Liverpool.

We are one of the UK's leading photography spaces, and the only gallery dedicated to photography and related media in the North West of England.

Open Eye has consistently championed photography as an art form that is relevant to everyone. We promote the practice, enjoyment and understanding of photography by creating challenging and entertaining opportunities to experience and appreciate distinctive, innovative photographs.

We support established and emerging artists, developing practical, critical and professional skills among photography practitioners; we also offer training and development opportunities to people within our local community.

In November 2011 Open Eye re-launched in a brand new purpose-built home in one of the city's most prestigious and prominent new developments on the Liverpool Waterfront.





The gallery opens onto a large covered public square and is split over two floors. On the ground floor we present our international programme of cutting edge contemporary photography. We also commission Wall Works - large-scale graphic art installations for the external facade of the gallery.

Our position at the heart of the regenerated Waterfront – next to the Museum of Liverpool and a stone’s throw from Tate Liverpool and Albert Dock – cements our commitment to the city and its vibrant cultural life.

As well as presenting a programme of international, high-quality exhibitions we also house a permanent Archive containing photographs from the 1930s to the present day. We support established and emerging artists, developing practical, critical and professional skills among photography practitioners; we also offer training and development opportunities to people within our local community.



# Gallery Overview

Open Eye Gallery will prepare the gallery space, hire technicians and hang all the artwork for each exhibition.

The gallery will also create an introduction wall panel text for inside the gallery, individual labels where appropriate, an audio guide and market the exhibition through the Open Eye website, local press and social media.

## In-House Equipment

The gallery has the following equipment available to hire:

- 3 Projectors (1 HD)
- 63 inch projection screen
- 62 inch Plasma TV
- 9 19" LCD TV's
- Flipchart
- 2 DSLR cameras
- Yamaha small powered speakers
- JBL small powered speakers
- 6 pairs Sony Headphones



All the walls in all three gallery spaces are stud walls, so wires from digital screens can be hidden easily.

Open Eye has Baltic 64005 exhibition track lighting throughout all three gallery spaces, which is completely adjustable.

### External Suppliers

Open Eye Gallery has an approved local supplier list for additional furniture, AV equipment, lighting/sound engineers, merchandise design & production and professional printing. We work with fully insured fine art handlers and transport companies, all collections and deliveries are arranged by the gallery.

### Additional Services

With a wealth of experience programming public gallery events the team at Open Eye develops a set of events for each exhibition to enhance the visitor experience. This could take the form of a series of talks, presentations, workshops screenings and tours. All profits go back into the gallery's public programme budget.





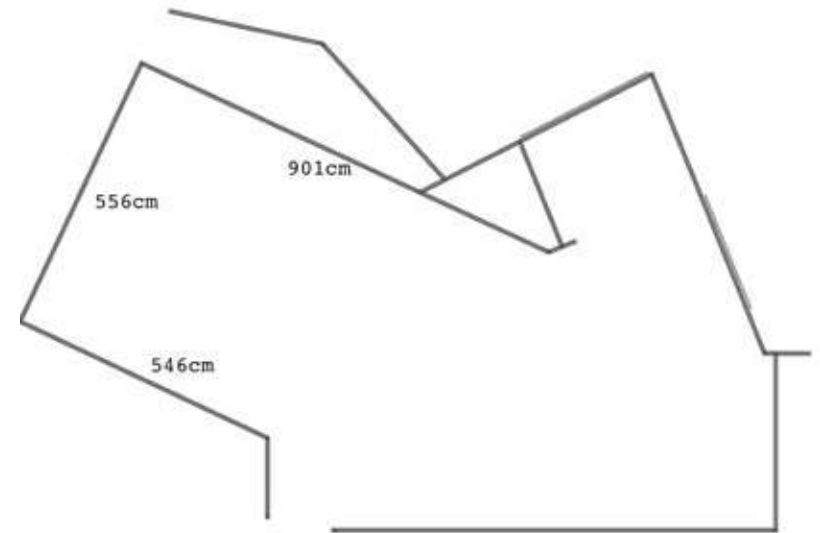
# Gallery One

Wall dimensions  
901cm x 556cm x 546cm  
Ceiling height  
500cm

Gallery one is located on the ground floor by reception and gallery shop (which is stocked in accordance with the current exhibition) and is the first room visitors enter.

The space is open and bright, with a double height ceiling. There are three - four large surfaces to display art work and a introductory text panel, along with the gallery guide.

There are six floor sockets evenly distributed around the gallery for easily power access. The floor is concrete.





# Gallery Two

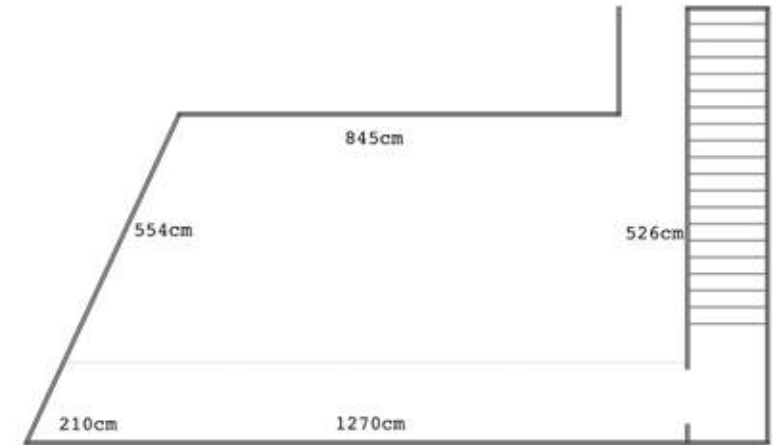
Wall dimensions

554cm x 198cm x 526cm x 845cm

Ceiling height

285cm

Gallery two is accessed via a corridor linking the two ground floor galleries. This space can be easily adapted into different sized spaces by building temporary walls, depending on the requirements.



Opposite are examples of the different spaces that have been created in the past including the original open plan.

Power sockets are in the ceiling of this room and the floor is concrete.







# Gallery Three

Wall dimensions

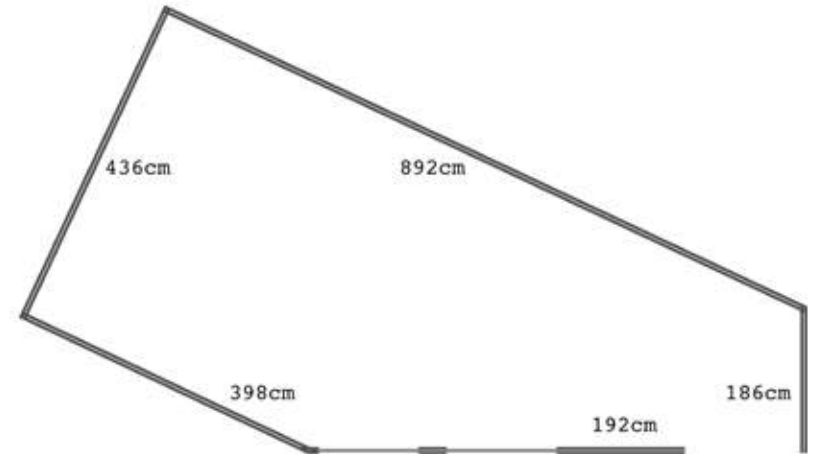
892cm x 186cm x 398cm x 436cm

Ceiling height

270cm

Gallery three is on the upper floor, accessed via stairs or a platform lift. It is the only gallery that does not have any natural light, and therefore it is ideal for showing archive work and light sensitive work.

Gallery three has a wooden floor with power access panels from three hidden floor panels evenly located around the room.







# The Western Wall

Wall dimensions

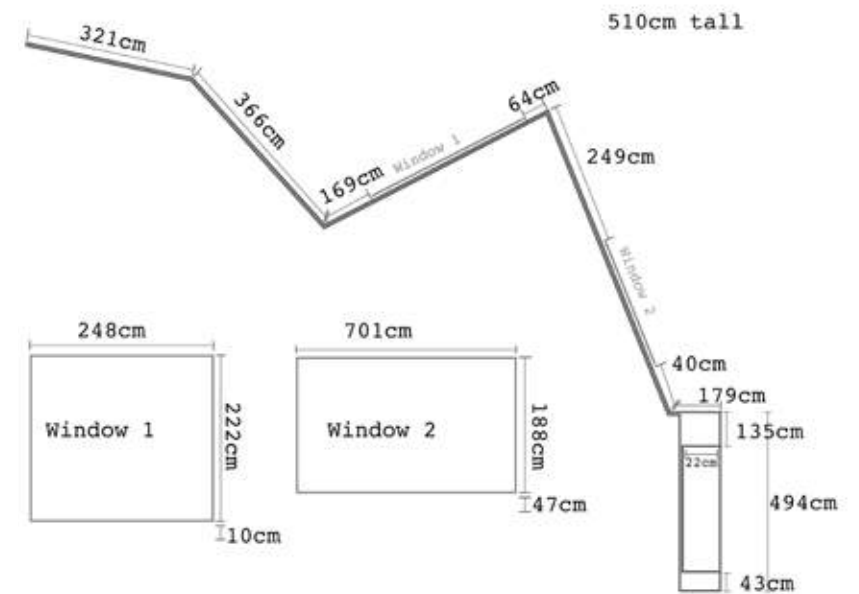
321cm x 366cm x 484cm x 490cm x 179cm x 494cm

Wall height

510cm

The western wall is the 16ft high exterior façade of the gallery used for large scale wall work. Made from Corian®, a solid surface material created by DuPont which can be covered in a number of adhesive materials.

Installations on the western wall last for much longer than the exhibitions in the gallery, at least a year. This is due to the high installation costs and the amount of time needed to de-install the previous work.





# Local Area

The Open Eye Gallery is located on Mann Island which is part of a redevelopment on Liverpool's Waterfront. Centrally located and only a 2 minute walk to the new Museum of Liverpool, Tate Liverpool and Albert Dock and only a short walk from the Liverpool One shopping centre.

Our position at the heart of the regenerated Waterfront cements our commitment to the city and its vibrant cultural life and offer.

Open Eye Gallery is located in a complex of three black buildings that sit between the Strand, the Canning dock and the new Museum of Liverpool. Our entrance is on the ground floor, in a covered public courtyard which can be entered from the south side (facing the Museum of Liverpool) or the north side (facing Mann Island and the Liver Building).







# Contact and Information

Open Eye Gallery  
19 Mann Island  
Liverpool Waterfront  
Liverpool  
L3 1BP

[www.openeye.org.uk](http://www.openeye.org.uk)

Phone: +44 (0) 151 236 6768

Email: [info@openeye.org.uk](mailto:info@openeye.org.uk)

Open Eye Gallery receives regular revenue funding from



Images ©John McLaughlin  
©Mark McNulty  
©Paul Karalius

Gallery Plans ©Eleanor Suggett